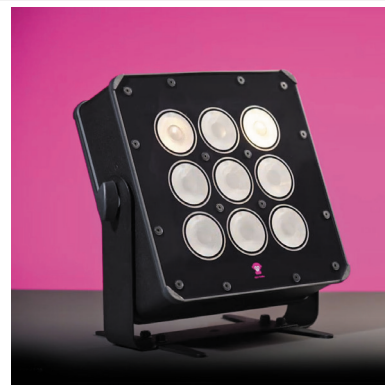


DIMENSION	WEIGHT	CONSTRUCTION	LED TYPE	BULBS
28.5 x 26.5 x 8.0cm	3.7kg	Aluminium and Polycarbonate	RGBWW	9 x LEDs

FEATURES

- LED lamp for outdoor use (IP65)
- With built-in battery for approx 8 hours or mains power connection (TRUE1 In)
- Ideal for events, stages, restaurants or permanent outdoor installations
- Powerful lamp with 9 x 18W LED – also for high walls and large areas
- 9 LEDs as controllable pixels, multipixel presets via app & remote
- Homogeneous light image & even color mixing for full flexibility in colour, brightness, effects & programs
- For use standing or via bracket mounting with 360° rotation function & grid feet
- Battery operation or continuous operation possible on mains power with power adapter
- Optional runtime management via app (e.g. power saving modes)
- Made in Germany
- Suitable for a variety of applications, e.g. ambient lighting, uplighting, facade lighting, stage lighting, gastronomy, dance floor & architecture
- 9 x 18 Watt pixel LEDs, LED Type: RGB + WW (2700K) + NW (6000K) + Lime controllable as multipixel
- Beam angle: 15 ° for Spot and 150 ° for Flood
- Controllable via remote control, smartphone app, wireless DMX
- Flicker-free LED control (DUAL-DRIVE, no PWM)
- Automatic signal repeater: connection to additional lamps over a distance of up to 1200 m
- Wireless DMX via CRMX & Ape Labs CONNECT (App for iOS & Android)
- DMX profiles: 6ch, 7ch, 12ch, 36ch, 54ch
- Radio frequency: 2.400 – 2.485 MHz / max. 20 dBm (100 mW EIRP*)
- Theft protection through motion sensor & acoustic alarm and 2 x safety option via bracket or M6 eyelet (included)
- Pairing function for stable wireless connection with all Ape Labs devices
- Cloud-based storage of lamp settings (app compatible)
- Free software updates for lamps, CONNECT and apps with regular updates with new features from the community
- TRUE1 Loop socket (100–240 V mains power connection)



LIGHT PROPERTIES

Wavelength red	622.5nm
Wavelength green	522.5nm
Wavelength blue	462.5nm
Colour temperature warm white	2700K
Colour temperature neutral white	6000K
Colour rendering in CRI (Ra)	90
PWM (Pulse Width Modulation)	500Hz – 4000Hz
Flicker free	Yes
Dimmable	Yes
Illuminance LUX	Available on request

TECHNICAL SPECIFICATIONS

Power usage in Battery and Mains Modes	<ul style="list-style-type: none"> • 8h internal battery in dynamic mode (70% brightness) and 2h at 100% ultimate brightness • Charging voltage lamp 16 – 19 V • Operating voltage lamp 12 V • Battery type in lamp Li-Ion 96 Wh • Lamp operating voltage: 12 V • Mains input voltage: 100–240 VAC – 50/60 Hz • TRUE1 Loop input (V in) • Continuous operation possible • Lamp remains switched on in mains operation during a power failure
Control/Operation	<ul style="list-style-type: none"> • 4 group management via remote control and smartphone app or 4 DMX universes • Automatic signal repeater from lamp to lamp • Remote control item 8179 black or item 7865 white (approx. 50 meter range) • Smartphone app for iOS & Android via CONNECT Art. 8151 Cream or Art. 8152 Gray (approx. 1200 meter range) • Wireless DMX via CONNECT Art. 8151 Cream or Art. 8152 Gray (approx. 1200 meter range)
DMX	<ul style="list-style-type: none"> • 6 channel 8 bit RGBWW-NW-L • 12 channel 16 bit RGBWW-NW-L • 7 Channel Ape Labs Mode • 54 channel 9-pixel mode RGBWW-NW-L • 36 channel 9-pixel mode RGBWW
Wireless	<ul style="list-style-type: none"> • 2.4GHz (2400-2485MHz) • Max. 20dBm ~ 100mW (EIRP*)
Housing	<ul style="list-style-type: none"> • IP65 waterproof • 360° rotating bracket with fold-out grid feet • Hole diameter for bracket mounting: 10,3 mm • Acrylic glass surface, scratch-resistant (Optical HC material)
More Functions	<ul style="list-style-type: none"> • Music Fashion • Full flexibility in colour, brightness, effects and programs • Flicker-free LED control (DUAL-DRIVE Technology, no PWM) • Pairing of all Ape Labs devices for stable wireless connection • Cloud-based storage of personal lamp settings • Free software updates for lamps, CONNECT and apps • Regular software updates with new features and community feedback